

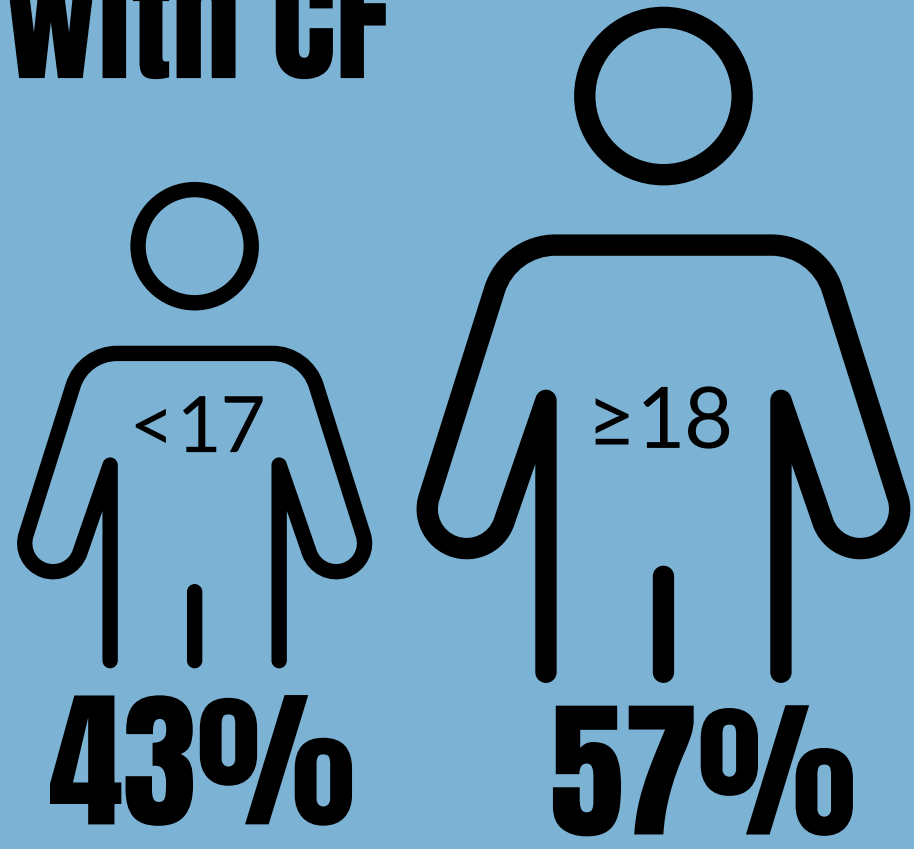
Australian Cystic Fibrosis Data Registry ACFDR

2022 Annual Report

The ACFDR collects information across 23 health services and uses this information to give CF teams feedback to improve health outcomes.

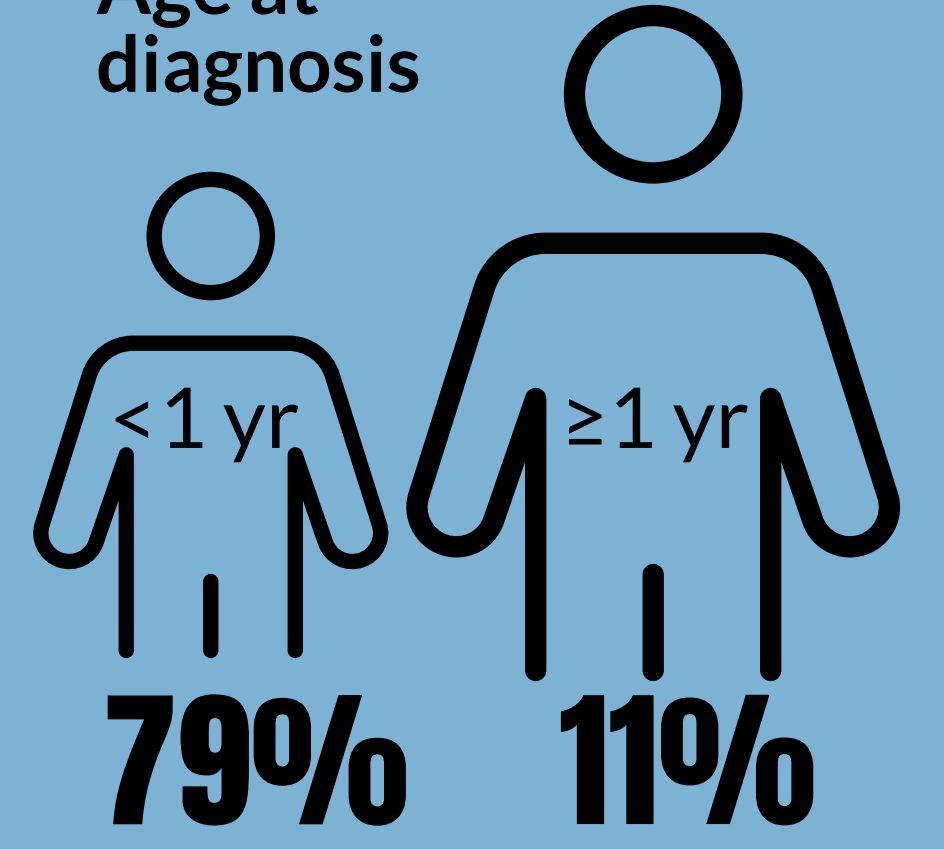
3,738

People with CF



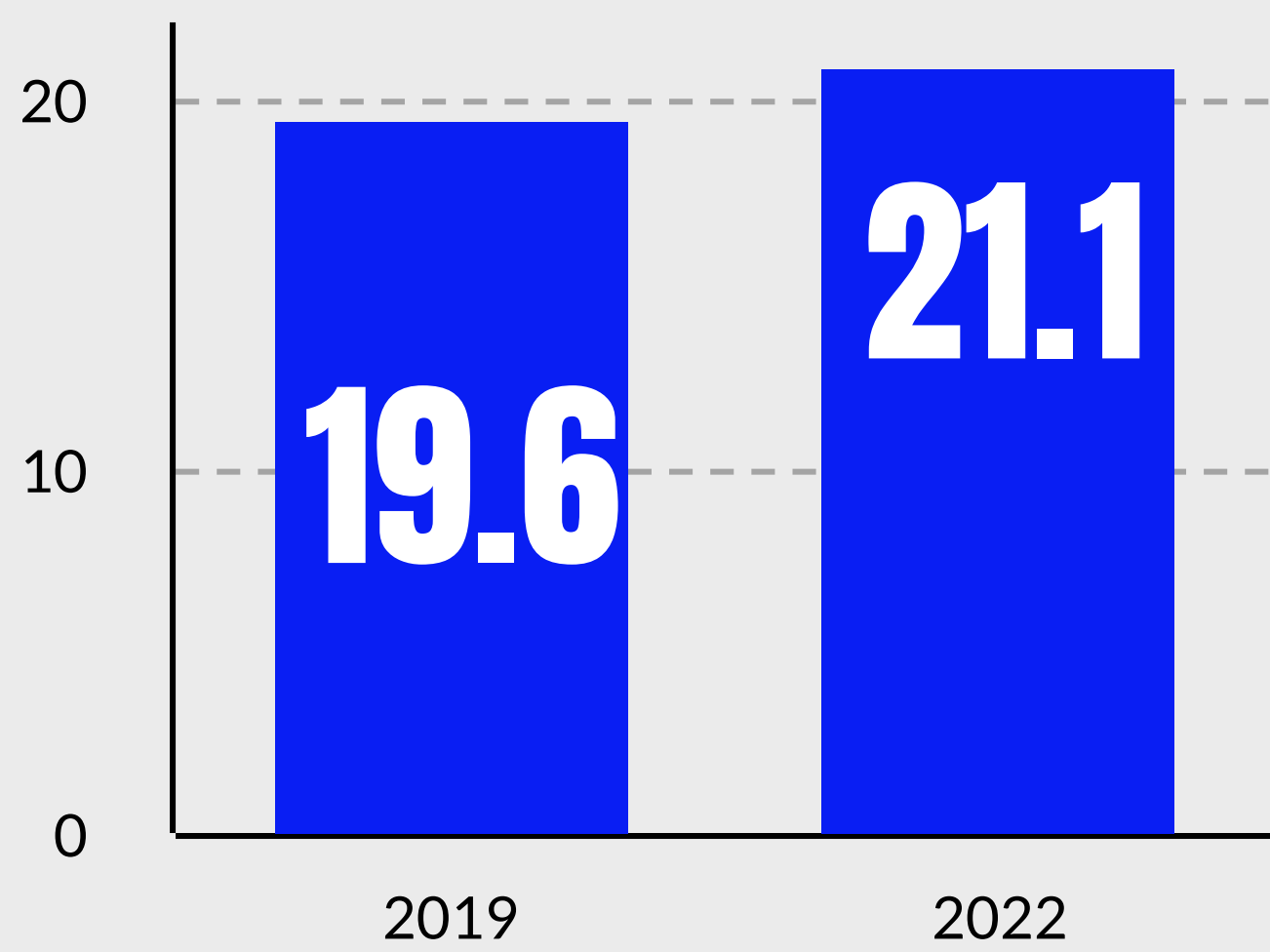
90 Newly Diagnosed

Age at diagnosis



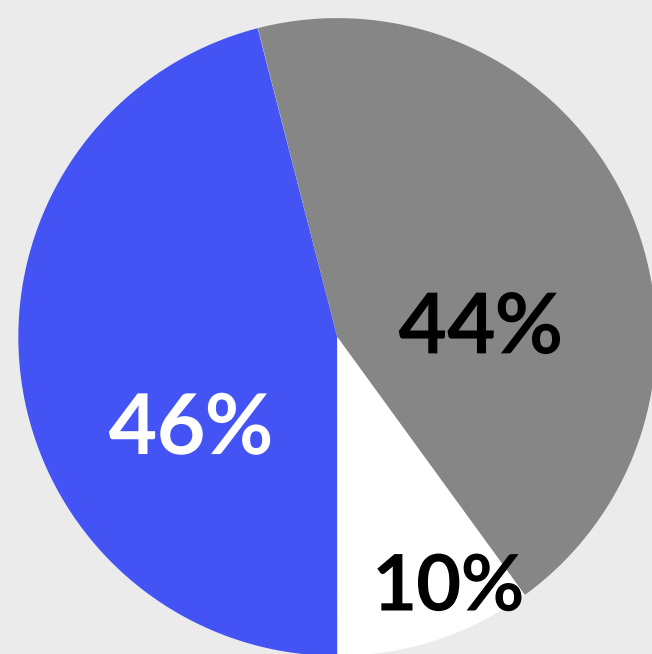
Median Age

of people with CF



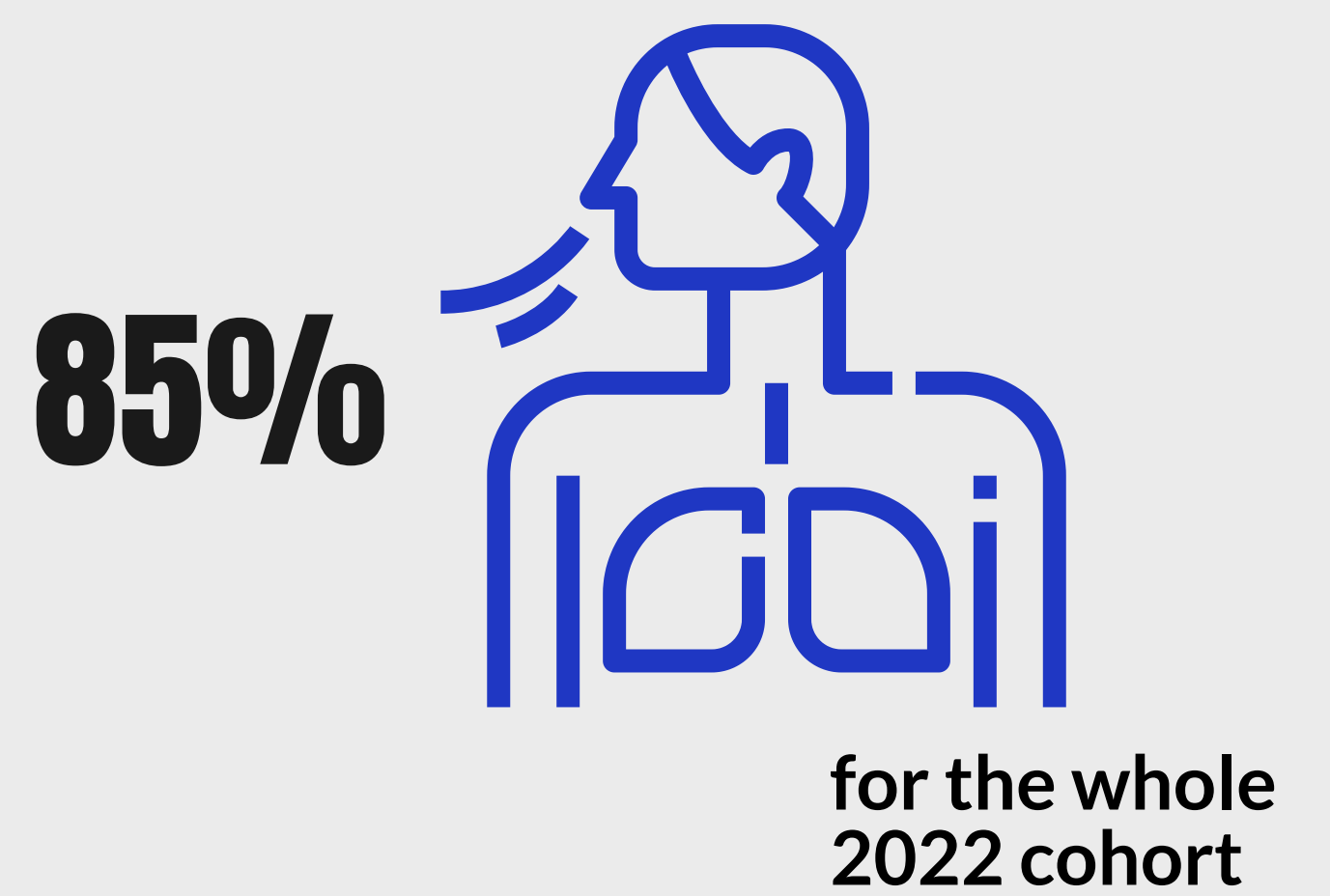
Genes MOST common gene F508del

F508del - 2 copies (46%)
F508del - at least 1 copy (44%)
Other (10%)



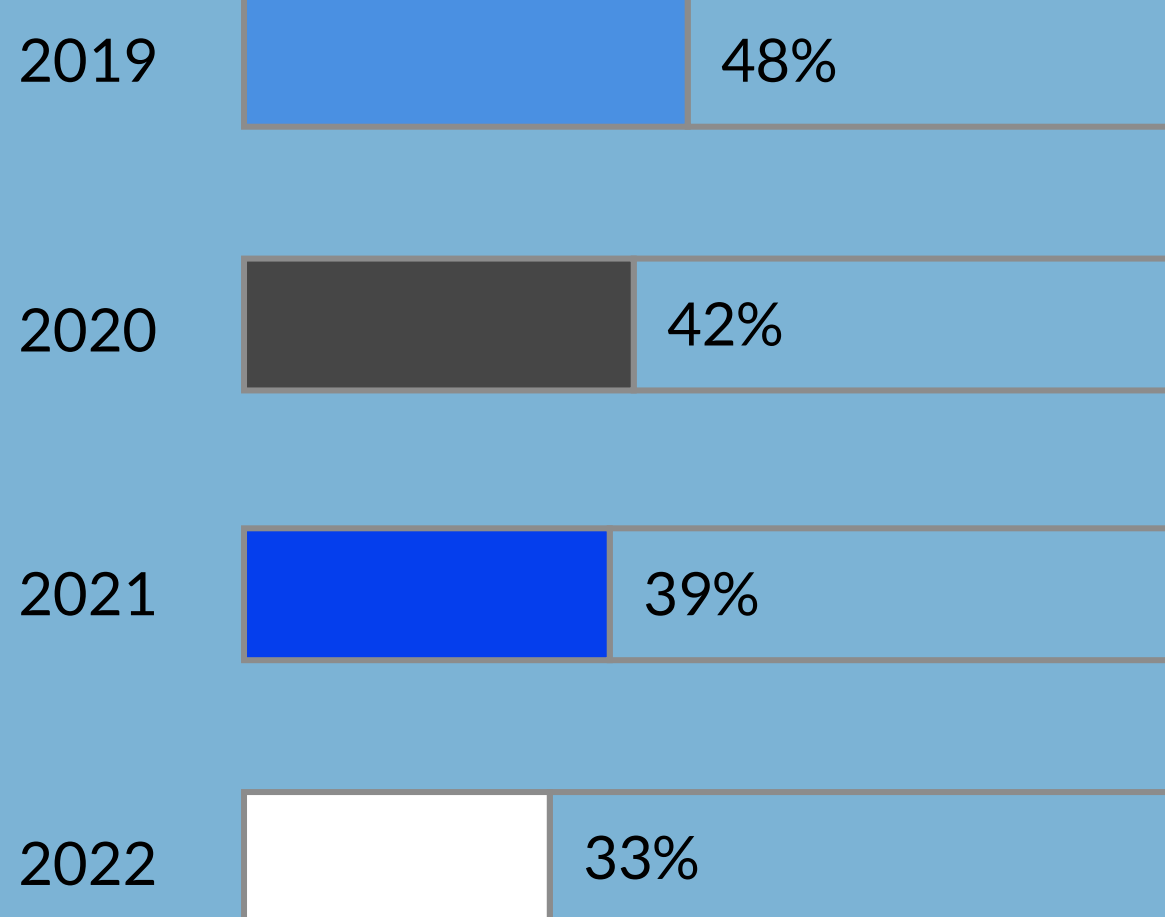
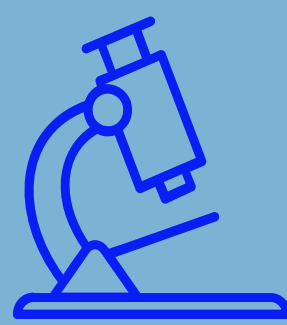
Lung Function

median FEV1 % predicted

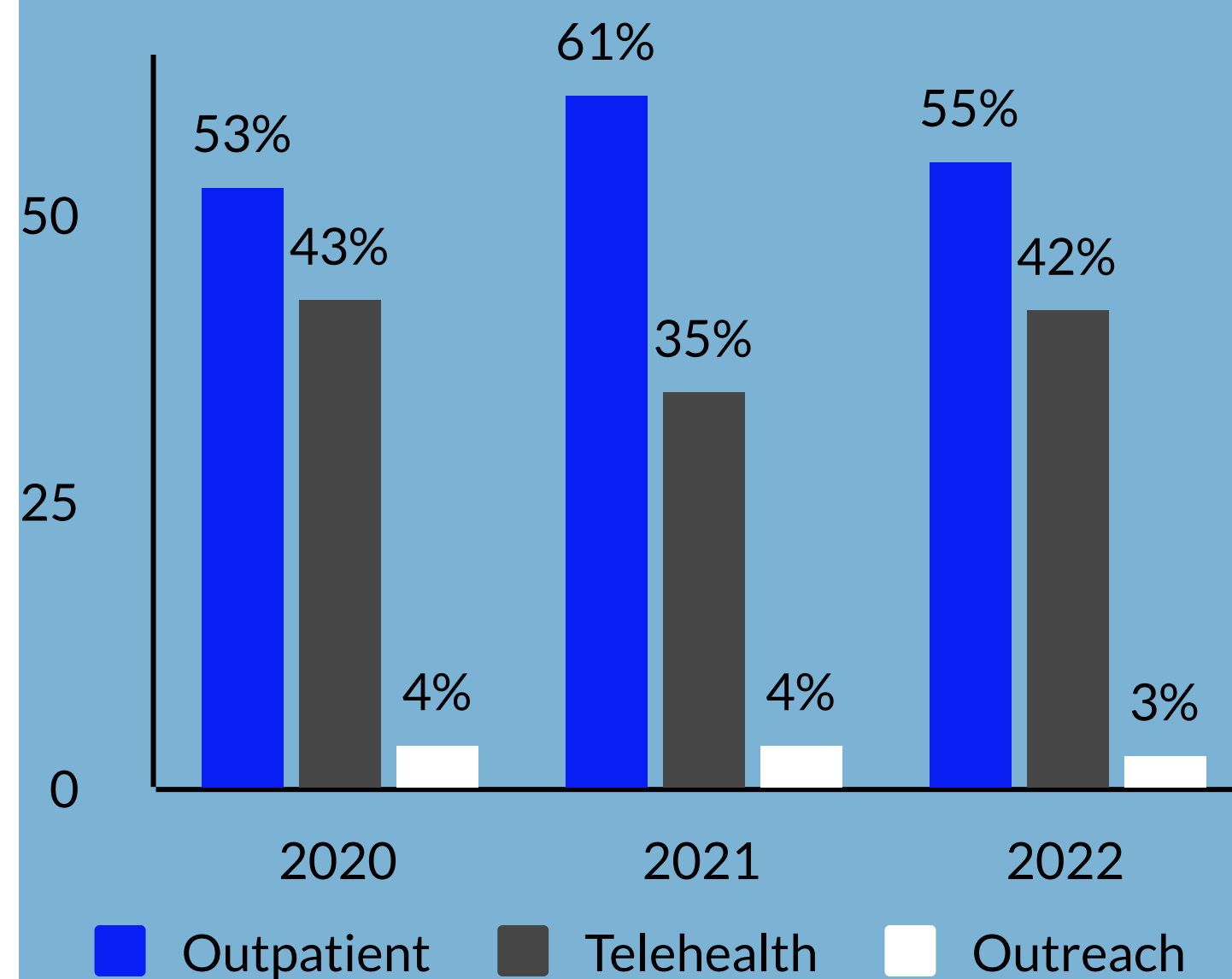


Infections

prevalence of *P. aeruginosa*

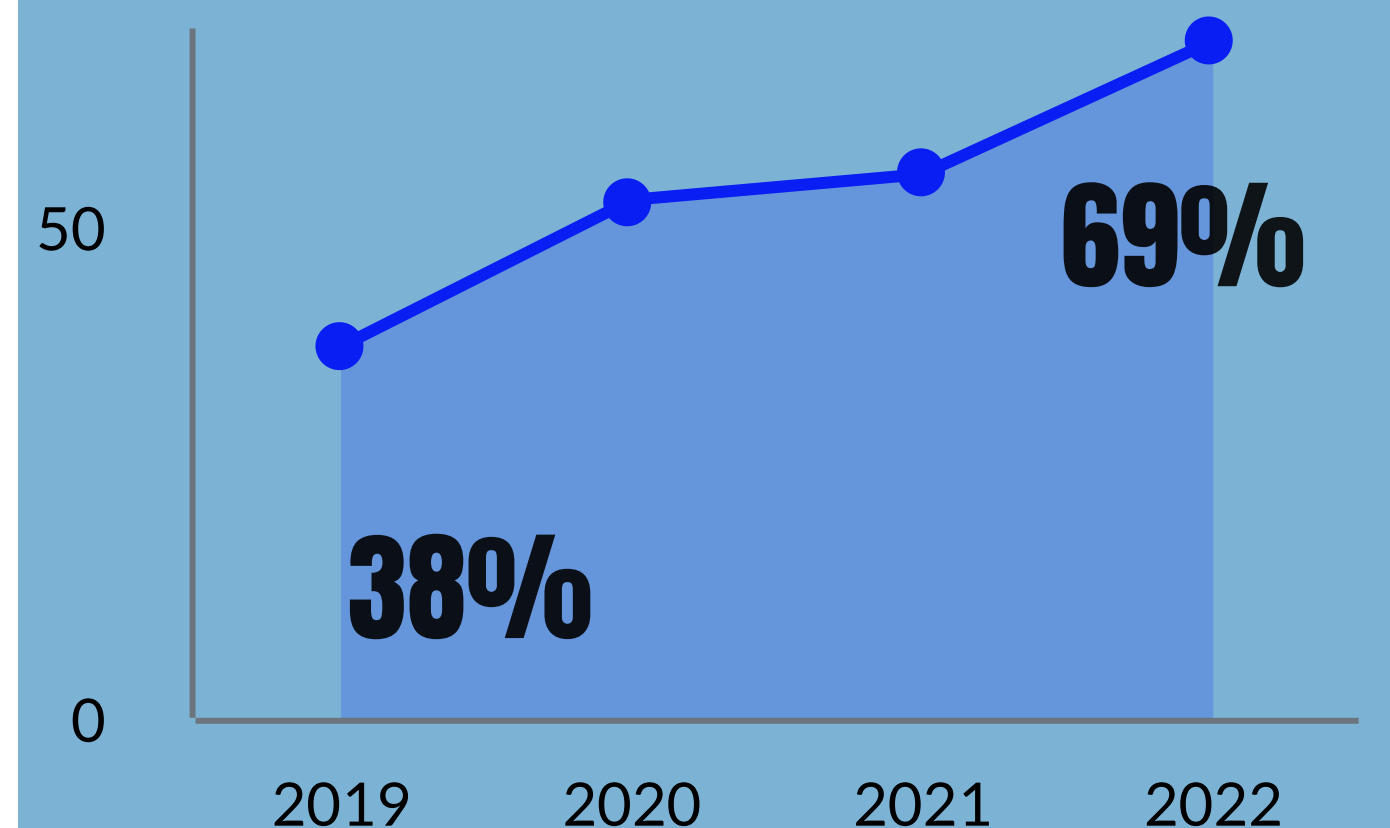
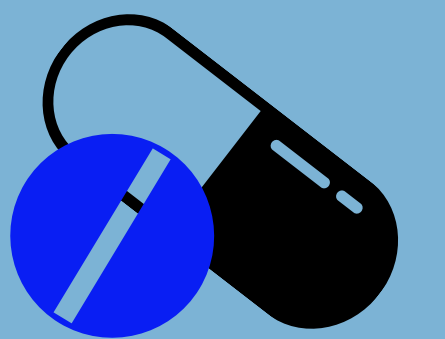


Telehealth



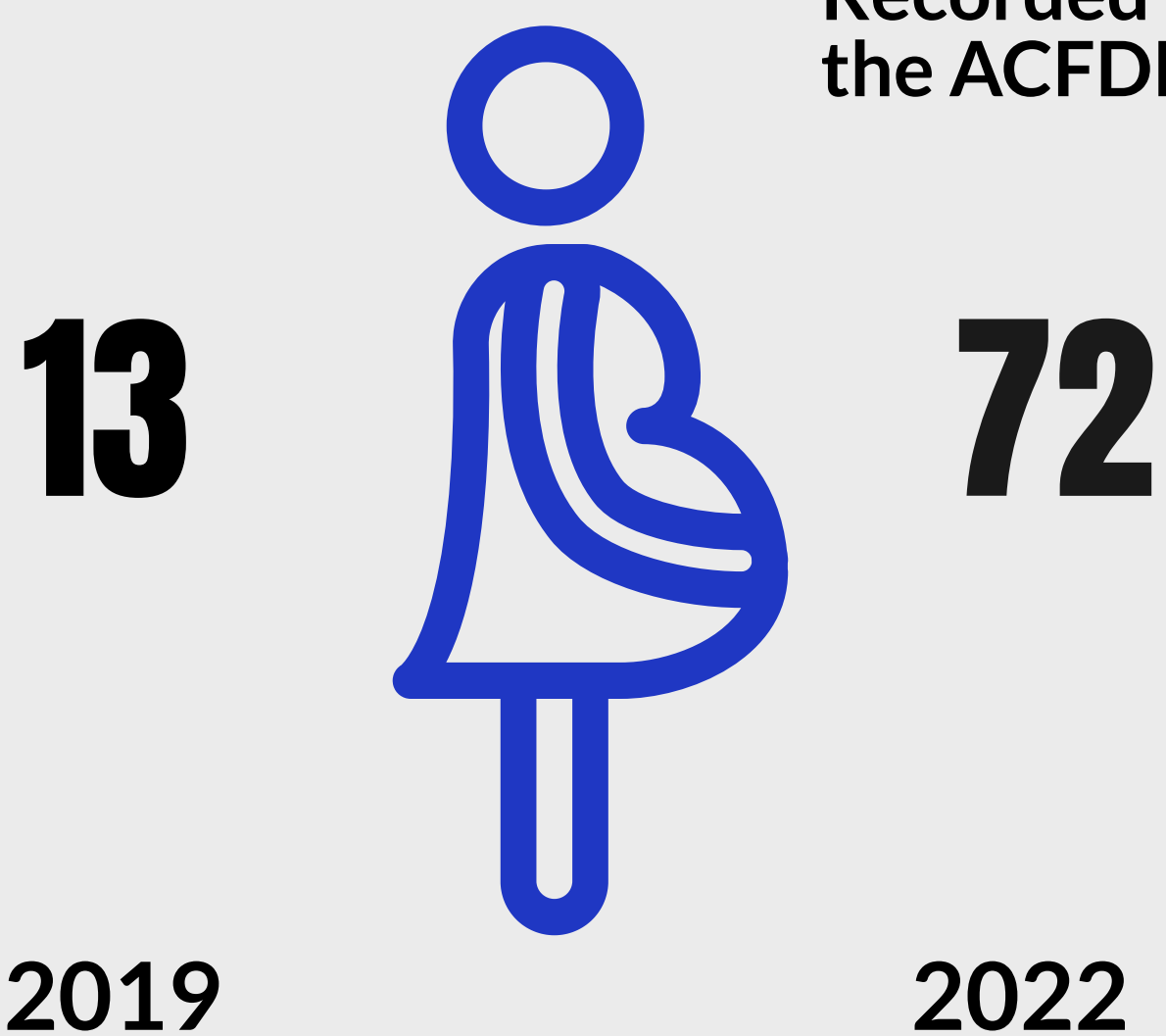
% taking

CFTR Modulators

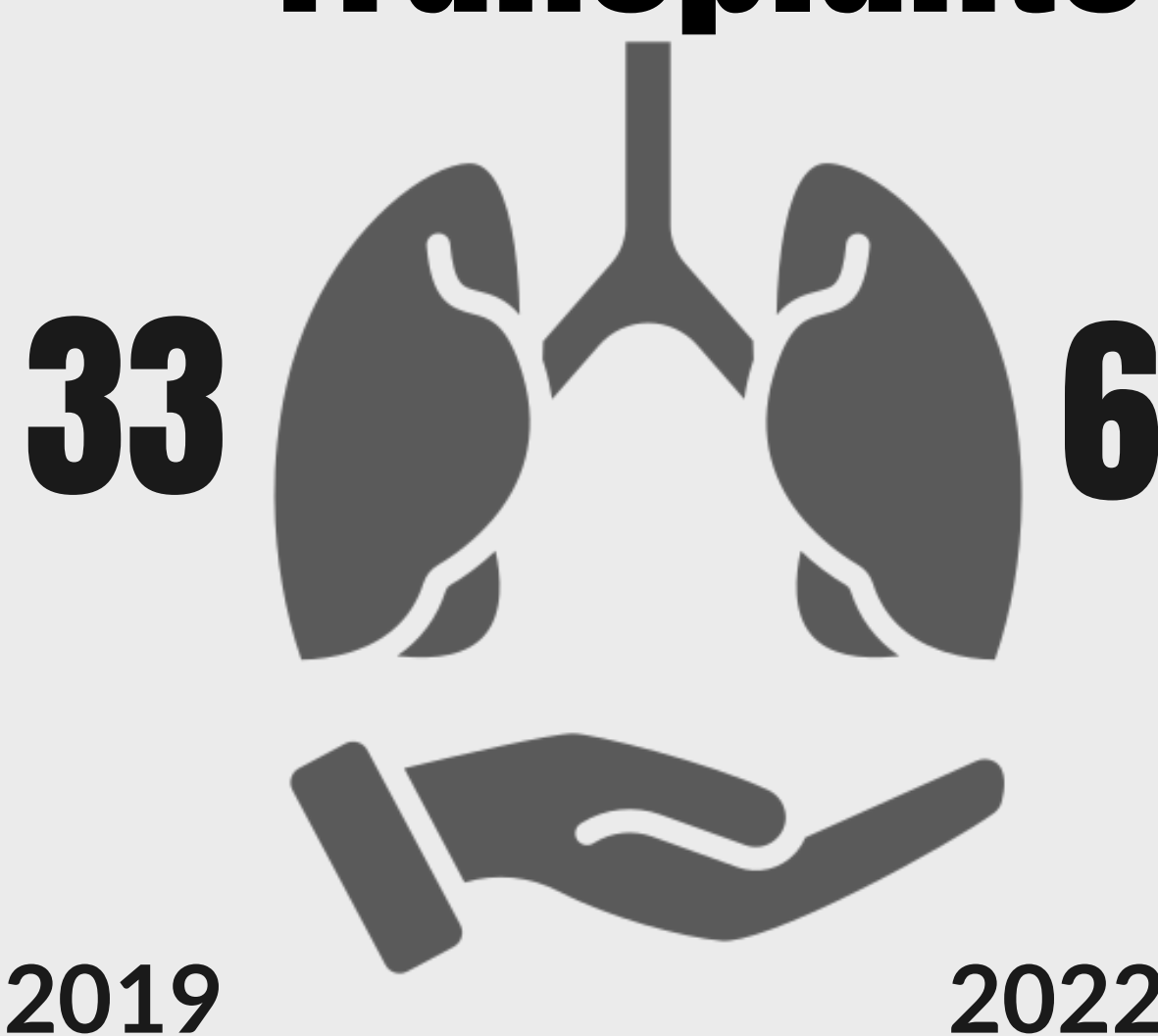


Pregnancies

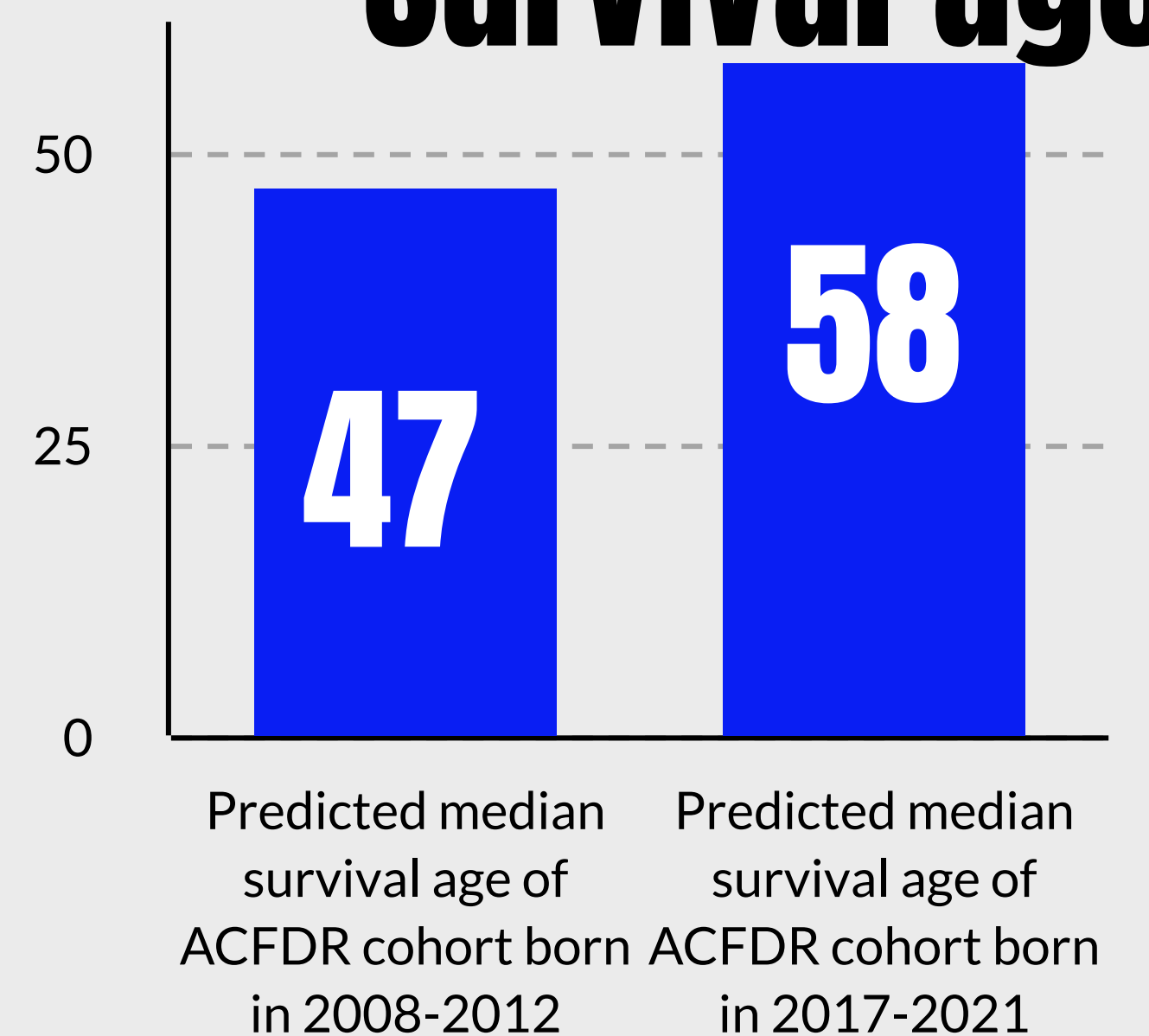
Recorded in the ACFDR



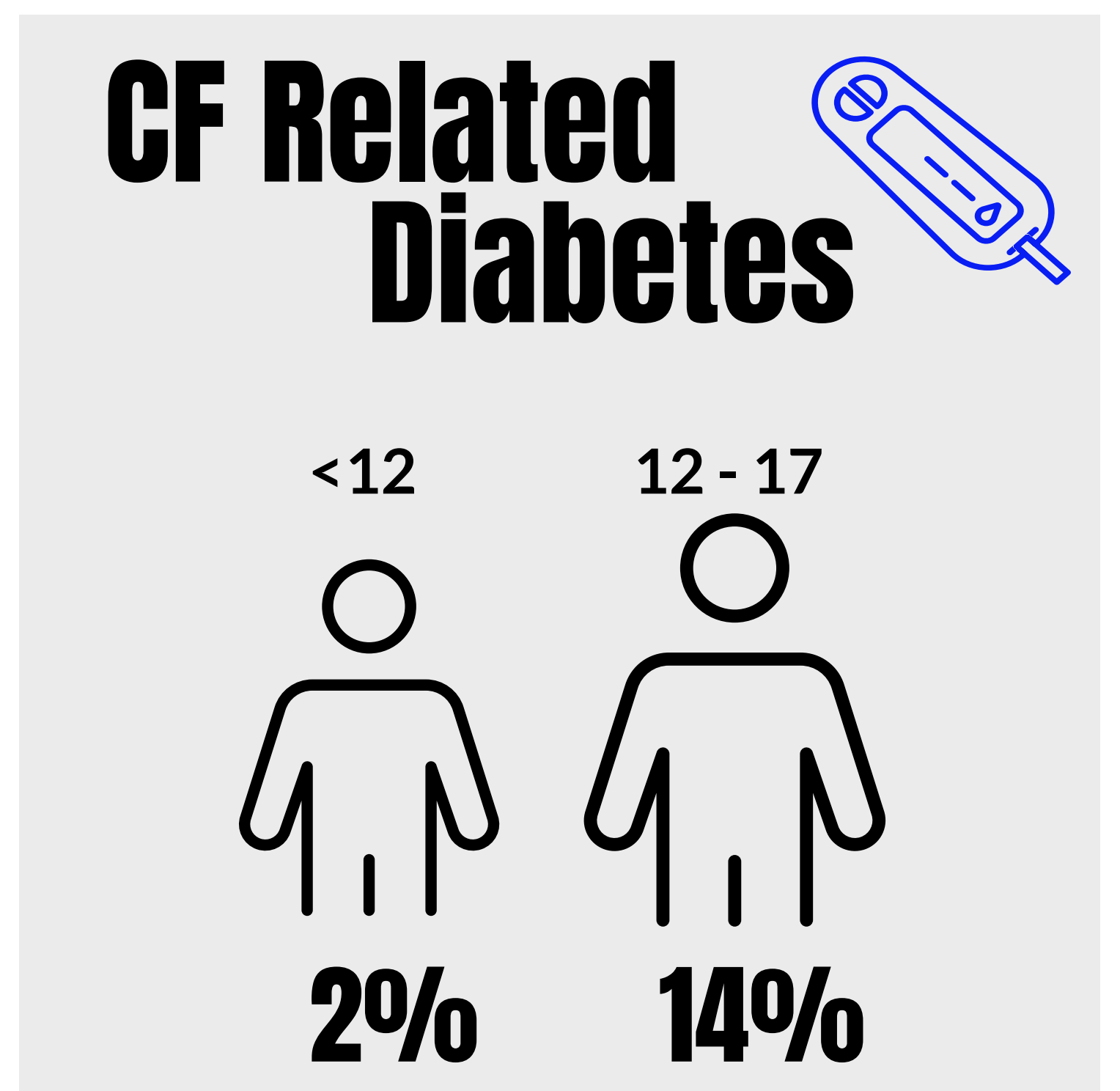
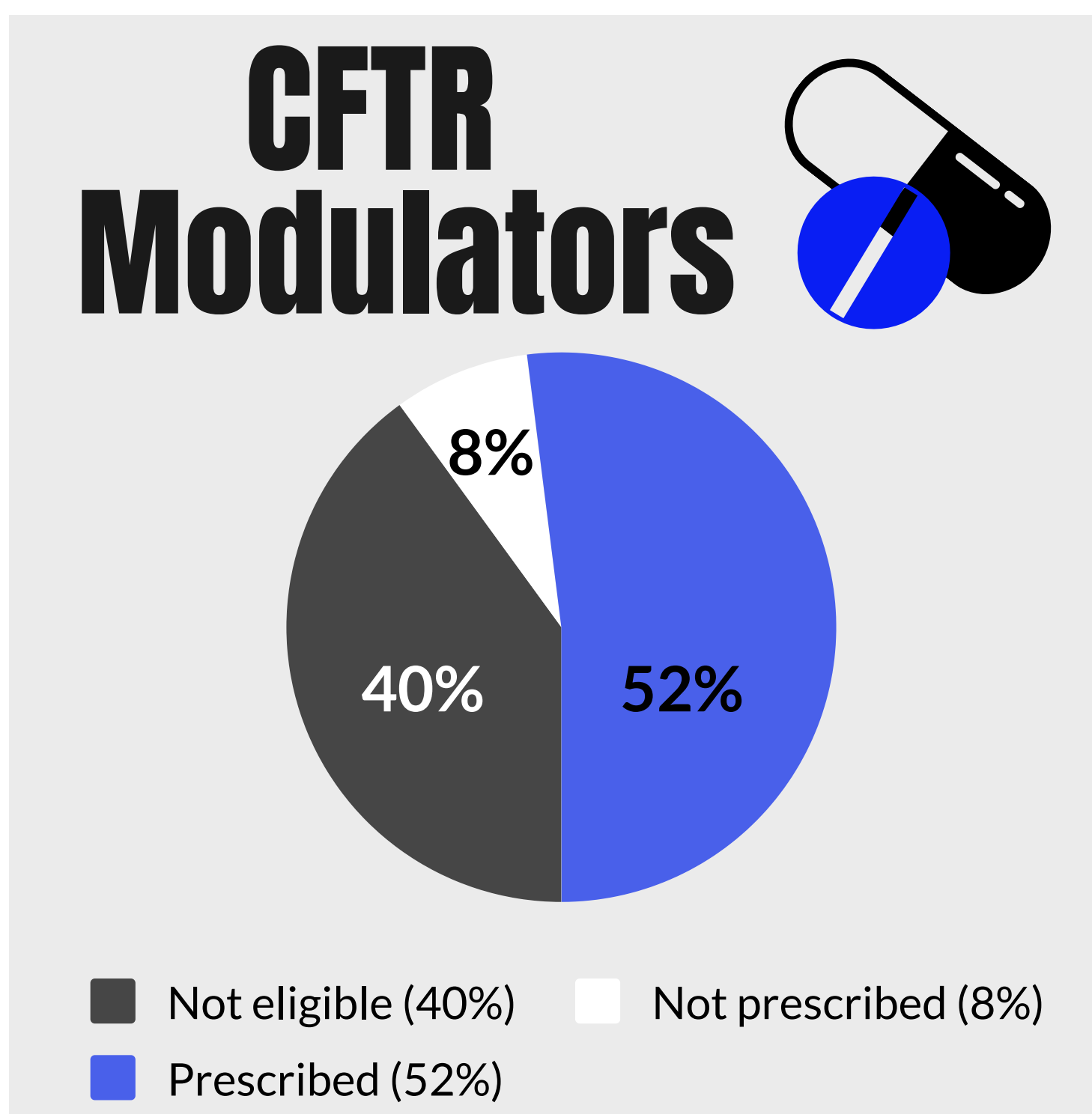
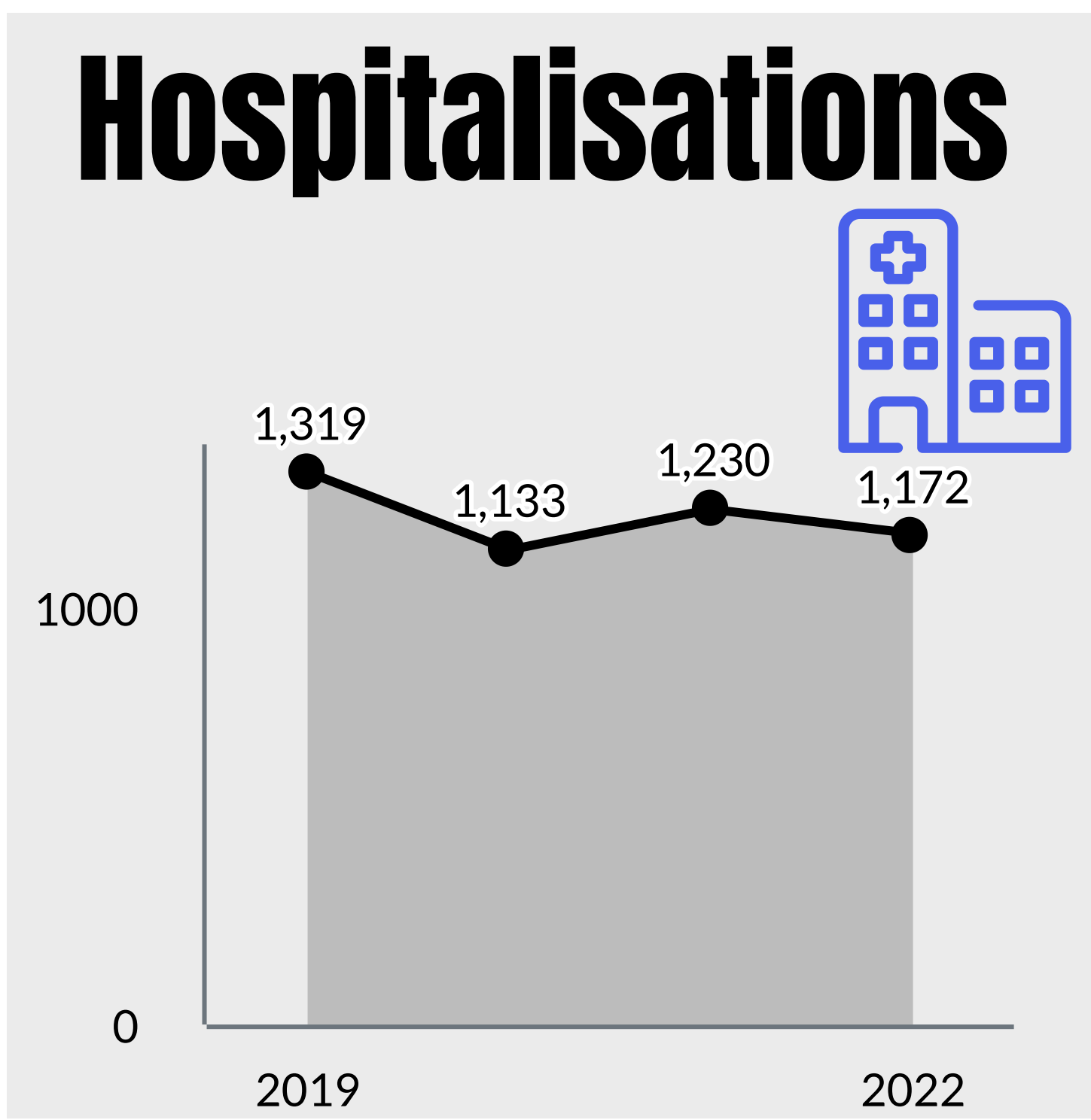
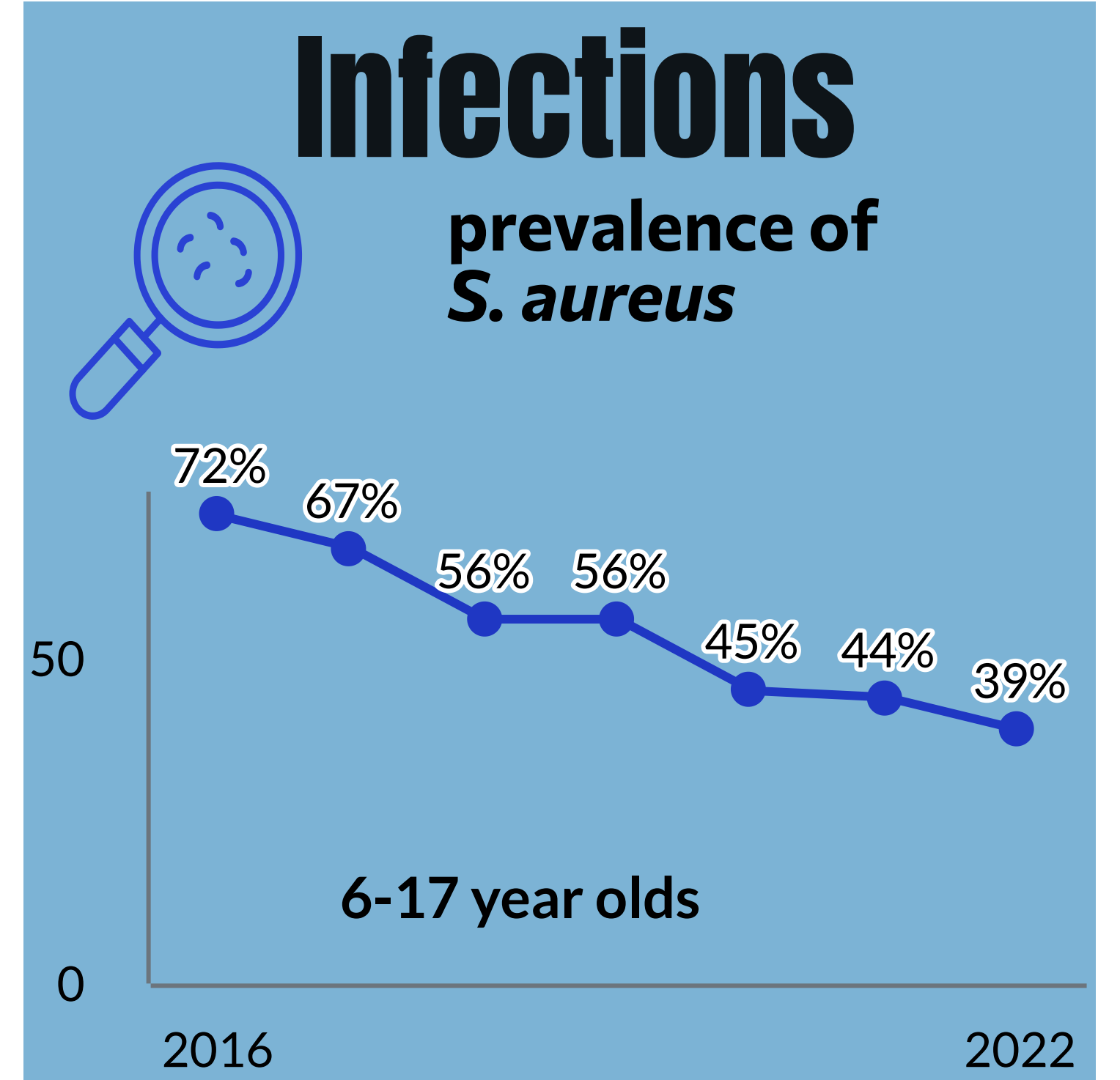
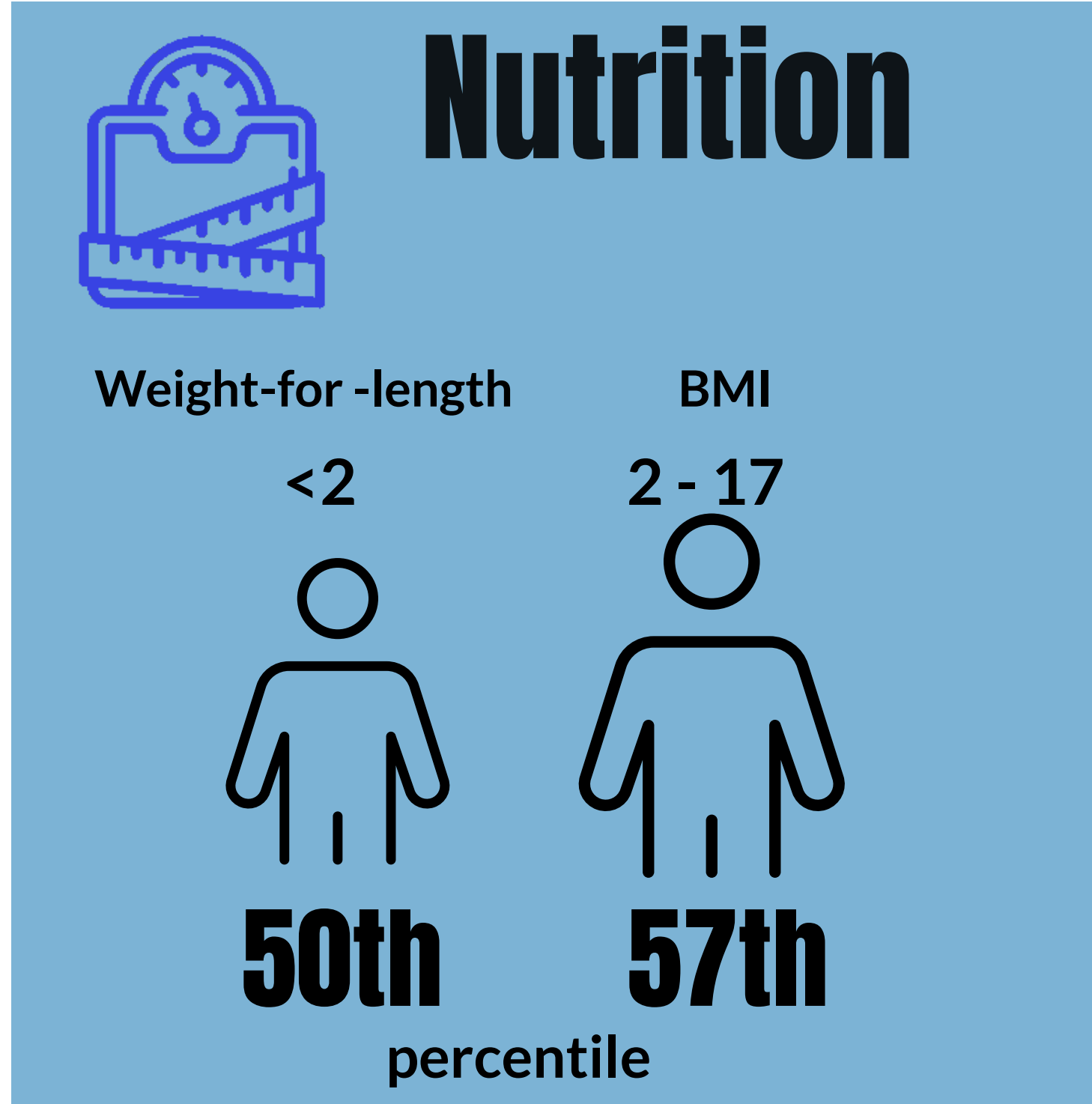
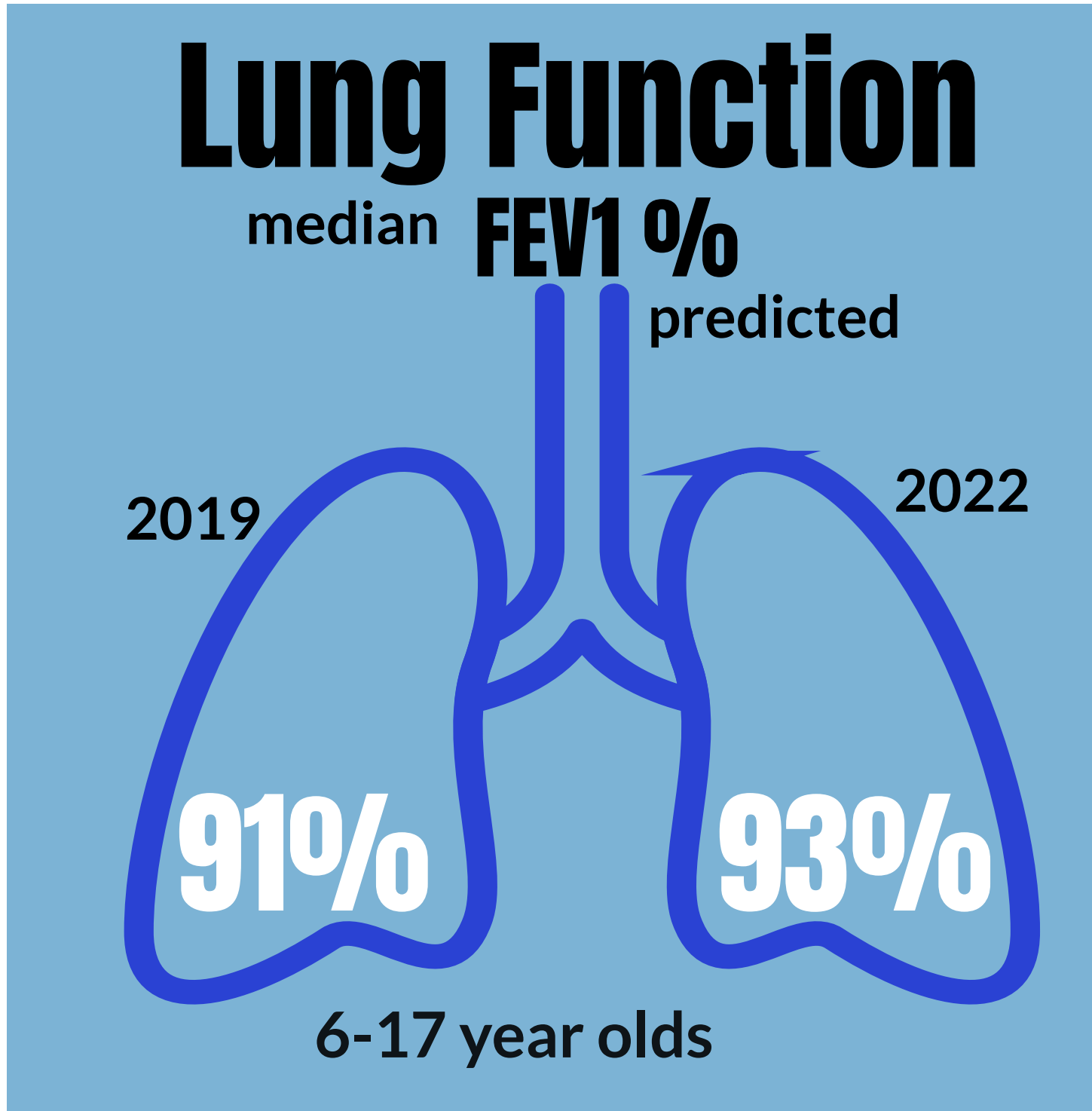
Lung Transplants



Predicted Survival age



Paediatric Data



Adult Data

